

CM1164

4-port USB DVI-D KVMP Control Center

- To improve the operational efficiency of intensive monitoring applications, there needs to be a fast and convenient way to view and manage more computers simultaneously, permitting faster response times from a single location. The CM1164 4-port USB DVI-D KVMP Control Center charts a revolutionary new direction in KVM switch functionality by combining a 4-port DVI-D switch with a 2-port USB hub, and providing the following display modes: Quad View mode, which simultaneously displays four digital computers/video sources on a single screen; as well as Picture in Picture mode (Dual, Triple or Quad) and Full Screen mode to meet the demands.

In addition, CM1164 provides Daisy Chain Control (DDC) functionality. A (DCC) port allows a user to connect and control up to four CM1164 units via a single console. This enables the use of only one keyboard/mouse over several computers or another CM1164. This is convenient for growing networks that need to monitor and manage more computers – daisy chain up to four units and switch between up to 16 computers.

With its unique design and innovative features, the CM1164 4-port USB DVI-D KVMP Control Center is the right solution for a wide range of practical applications, including control rooms, monitoring systems, and traffic control centers – allowing you to switch seamlessly between four DVI-enabled PCs, and share USB peripherals and audio from a multi-view console.

CM1164 Front view



CM1164 Rear view



Features

- One USB console independently and simultaneously controls four DVI-D computers and two additional USB devices
- Multi-view console controls up to 4 video sources on one screen.
- Function control via OSD menu – display mode, port selection, daisy chain, and so on
- Hardware Cursor – OSD navigation via console mouse
- DCC (Daisy Chain Control) port enables users to connect up to four CM1164 units, and use one console keyboard/mouse to manage computers or another CM1164
- Video DynaSync™ – exclusive ATEN technology eliminates boot-up display problems and optimizes resolution when switching between ports.
- 2-port USB 2.0 hub built in, fully compliant with USB 2.0 specification
- Computer selection via front panel push buttons, hotkeys, IR Remote Control and OSD (with mouse* function enabled)
- Console mouse port emulation/bypass feature that supports most mouse drivers and multifunction mice
- Console keyboard emulation /bypass feature that support most multimedia keyboards
- Independent switching for USB peripheral port, audio function, and KVM switch focus
- Power on detection
- Auto scan feature
- Multiplatform support – Windows, Linux, Mac and Sun.
- Keyboard and Mouse support emulation and bypass
- Superior video quality- up to 1920 x 1200 resolution
- Multilingual keyboard mapping-Supports English, Japanese, and French keyboards
- Full bass response provides a rich experience for 2.1 channel audio
- Mac/Sun keyboard support and emulation**
- Upgradeable firmware through computers' USB port

* For 3-key USB wheel mouse only

**PC keyboard combinations emulate Mac/Sun keyboards.

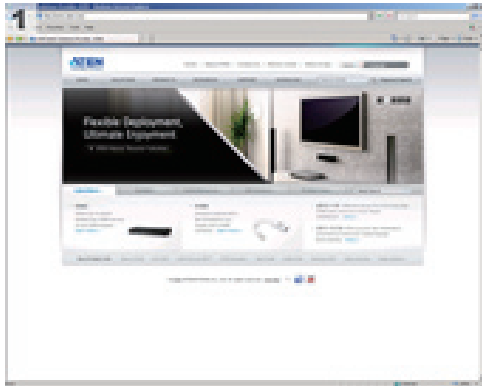
**Mac/Sun keyboards only work with their own computers.

Benefits

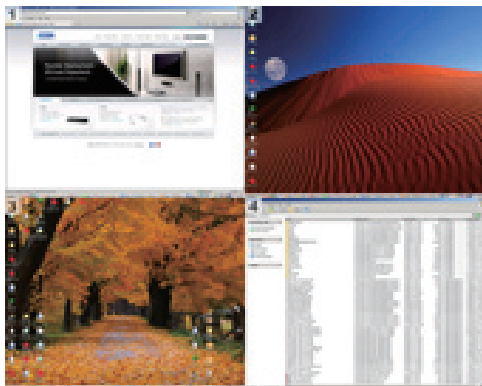
Flexible Display Modes	Quad View mode, Picture in Picture mode (Dual, Triple or Quad), and Full Screen modes. User can change size and location of each video source and easily click on demand to control PC via hardware cursor function.
OSD navigation via console mouse	Using the mouse connected to the console, control the OSD menu, and easily change the screen display size and location of each video source on screen
Expandable	Support Daisy Chain Control (DCC) mode for user to control keyboard/mouse over PC or another CM1164 via RS-232 command line. User can easily connect and control up to three CM1164 using RJ45 cables.
Video DynaSync	ATEN's exclusive Video DynaSync technology automatically detects the horizontal and vertical offset values of each computer's display settings and synchronizes them with the monitor you are working on, ensuring that the display resolution will always be correct when switching ports.

Display Mode

Full View Mode



Quad View mode



Picture in Picture mode

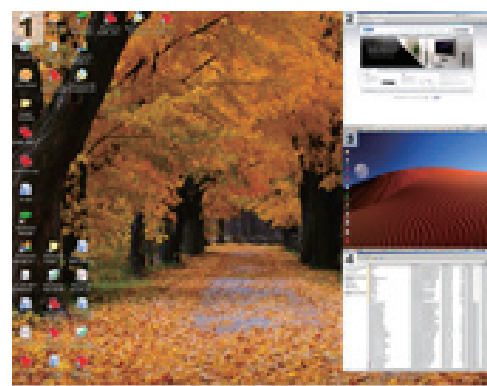
- Dual

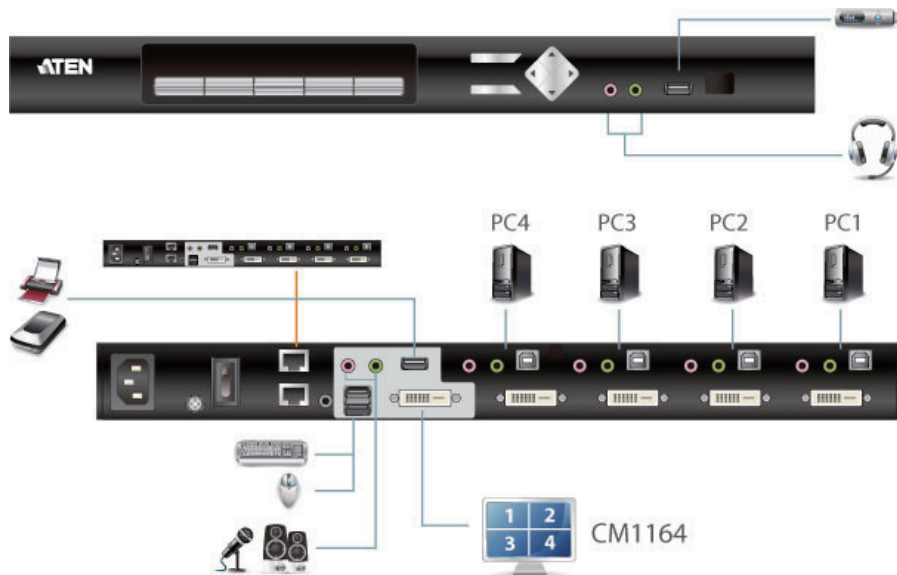


- Triple



- Quad





Specification

Function			CM1164
Computer Connections			4
Port Selection			Front Panel Pushbuttons; Hotkeys; IR Remote Control; On-Screen Display (OSD)
Connectors	Console Ports	Keyboard	1 x USB Type A Female (Black; rear panel)
		Video	1 x Single Link DVI-D Female (White)
		Mouse	1 x USB Type A Female (Black; rear panel)
		Speaker	2 x Mini Stereo Jack Female (Green; 1 x front panel, 1 x rear panel)
		Mic.	2 x Mini Stereo Jack Female (Pink; 1 x front, 1 x rear)
		DC Control	2 x RJ-45
	KVM Ports	Keyboard / Mouse	4 x USB Type B Female (White)
		Video	4 x Single Link DVI-D Female (White)
		Speaker	4 x Mini Stereo Jack Female (Green)
		Mic.	4 x Mini Stereo Jack Female (Pink)
Power		1 x IEC320 Jack	
USB 2.0 Hub		2 x USB Type A Female (White; 1 x front panel; 1 x rear panel)	
Switches	Selected	11 x Pushbuttons	
LEDs	KVM	4 (Orange)	
	Audio	4 (Green)	
	USB	4 (Green)	
Emulation	Keyboard / Mouse	USB	
Video		1920 x 1200 @ 60 Hz (DVI-D)	
Scan Interval		1–99 secs. (Default: 5 secs)	
Power Consumption		100V/ 6.7 W; 240V/ 13.6 W	
Environment	Operating Temp.	0–40°C	
	Storage Temp.	-10–60°C	
	Humidity	0–80% RH, Non-condensing	
Physical Properties	Housing	Metal	
	Weight	2.50 kg	
	Dimensions (L x W x H)	43.24 x 15.41 x 4.40 cm	

ATEN International Co., Ltd.

3F., No.125, Sec. 2, Datong Rd., Sijhih District., New Taipei City 221, Taiwan
 Phone: 886-2-8692-6789 Fax: 886-2-8692-6767
 www.aten.com E-mail: marketing@aten.com

Printed 10/2012 V2.0



© Copyright 2012 ATEN® International Co., Ltd.
 ATEN and the ATEN logo are trademarks of ATEN International Co., Ltd.
 All rights reserved. All other trademarks are the property of their respective owners.