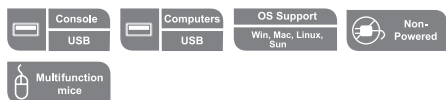
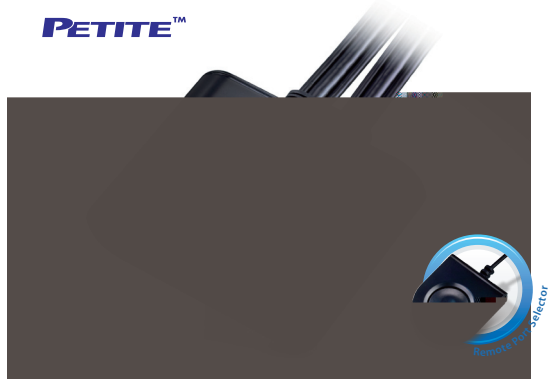


CS22U

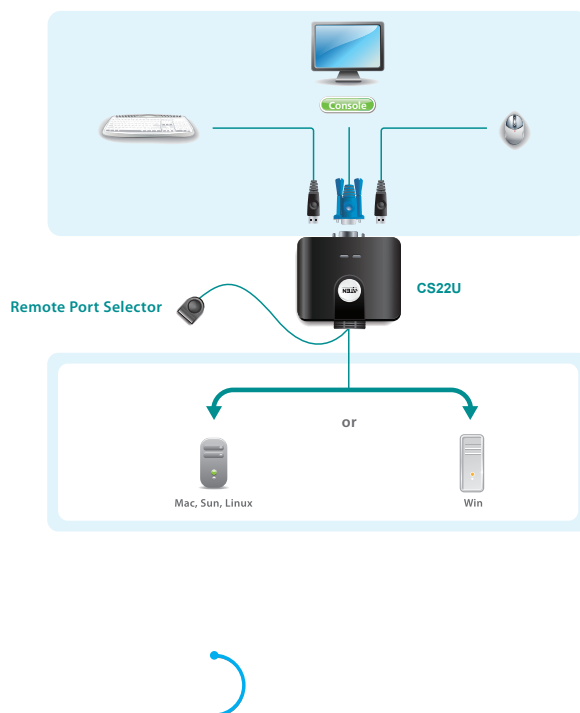
2-Port USB Cable KVM Switch

- The CS22U is a 2-port USB Cable KVM Switch that provides a simple and quick method of selecting computers – a built-in remote port selector. This allows the CS22U unit to be hidden from sight, while the remote port selector can be placed conveniently on the desktop.

The CS22U's compact all-in-one design makes it ideal for multiplatform desktop applications that require high resolution video.



- One USB console controls two USB computers
- Compact design, built-in 0.9m cables
- Supports multifunction mice
- Multiplatform support – compatible with all operation platforms PC (Windows, Linux and most others), Mac and Sun
- USB mouse port can be used for USB 1.1 hub and USB 1.1 peripheral sharing
- All-in-one design
- Superior video quality – up to 2048 x 1536; DDC2B
- Non-powered



Function			CS22U
Computer Connections			2
Port Selection			Remote Port Selector
Connectors	Console Ports	Keyboard	1 x USB Type A Female (Black)
		Video	1 x HDB-15 Female (Blue)
		Mouse	1 x USB Type A Female (Black)
	KVM Ports	Keyboard/ Mouse	4 x USB Type A Male (Black)
		Video	2 x HDB-15 Male (Blue)
LEDs	Selected		2
Cable Length	Computers		0.9 m
	Remote Port Selector		1.8 m
Video			2048 x 1536, DDC2B
Environment	Operating Temp.		0–50°C
	Storage Temp.		-20–60°C
	Humidity		0–80% RH, Non-condensing
Physical Properties	Housing		Plastic
	Weight		0.31 kg
	Dimensions (L x W x H)		7.00 x 8.20 x 2.50 cm

